

### Installation Instructions

#### I. Header Preparation

- Dimension "A" must be maintained from jamb to centerline of spindle.
- 2-3/4" (69.9) must be maintained from hinge side of header to centerline of spindle regardless of header width.
- For closer installation see Template OC60480B.

#### II. Door Preparation

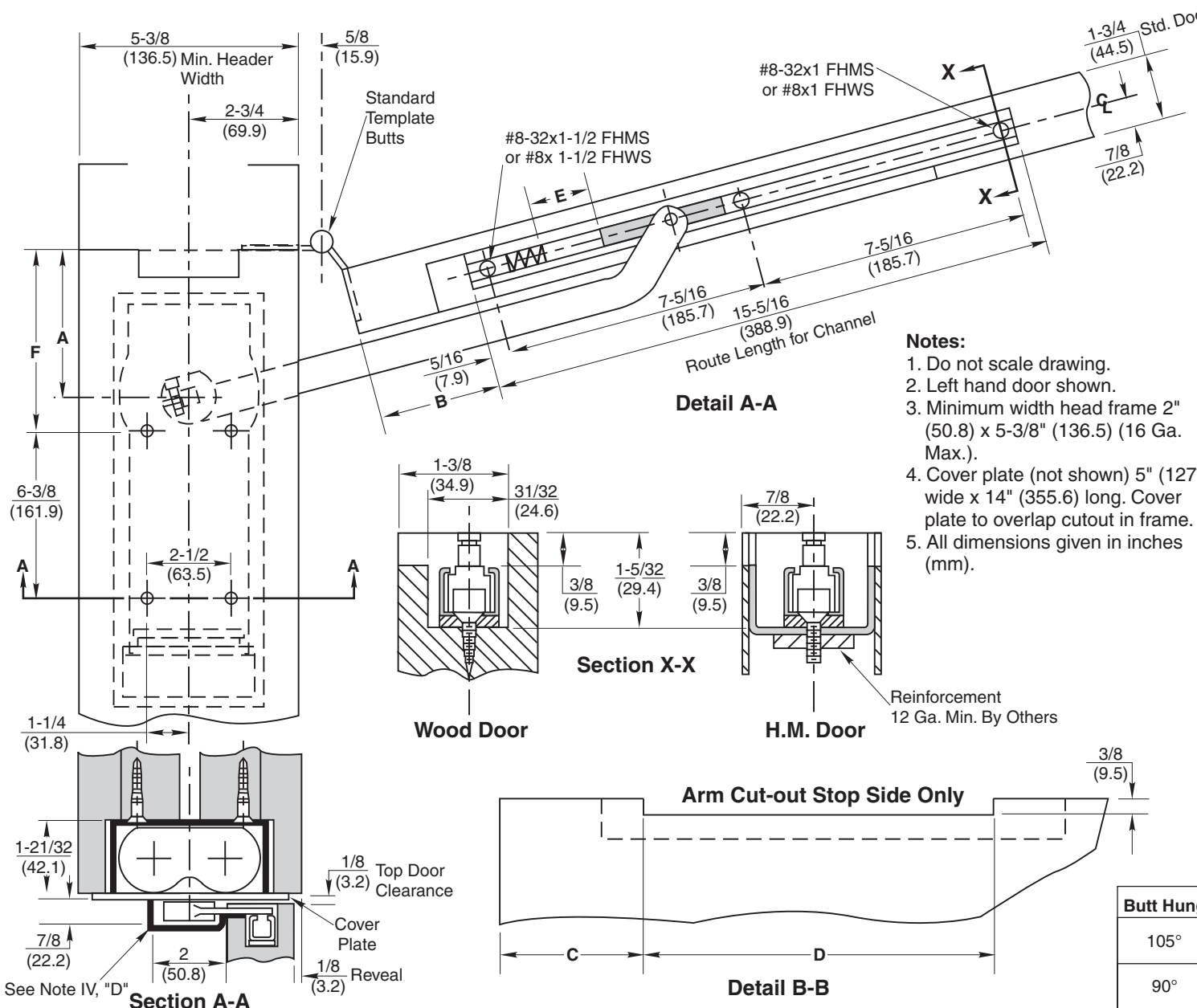
- Route top of door for slide channel installation (Detail A-A). On metal doors, spacers may be needed to maintain required 3/8" (9.5) dimension from top of door to top of slide channel (Section X-X).
- Routing is needed on stop side of door for arm clearance. (Detail B-B).
- Prepare door for butts as normal.

#### III. Door Installation

- Standard door clearances are to be maintained.
- Prepare framing for template butts as normal.
- Install "E" buffer and arm slider.
- Hang door.

#### IV. Complete Installation

- Mount arm on spindle and secure with 1/4-20x7/8" socket head cap screw provided.
- Open door and actuate arm into open position. Slip arm over slide pin and secure with e type retainer clip.
- Adjust closer to desired door speed.
- Install removable stop by others.



## W0608 Series Overhead Concealed Door Closer Butt Hung

**RIXSON®**

**ASSA ABLOY**

www.rixson.com

TEMPLATE NUMBER

**OC60480A**

DATE

**05-09**